



Adelaide Road NW3

Parkheath
Sold on Service





Adelaide Road, NW3

Asking Price £780,000

Leasehold

- A substantial 4 bedroom, 2 reception, 2 bathroom apartment
- Approximately 1300 sq ft
- Set on the 4th floor of this impressive mansion block
- Concierge, lift, heating and hot water included
- 18ft reception with door to balcony plus semi open 13ft dining room
- Separate 11ft kitchen
- 4 double bedrooms, bathroom, shower room and separate w/c
- 189 years from 1987
- No ongoing chain
- Close to Swiss Cottage, Primrose Hill and the amenities of Finchley Road

Belsize Park/Hampstead
208 Haverstock Hill
NW3 2AG
Sales 020 7431 1234
Lettings 020 7431 3104
nw3@parkheath.com

South/West Hampstead
192 West End Lane
NW6 1SG
Sales & Lettings
Tel 020 7794 7111
192@parkheath.com

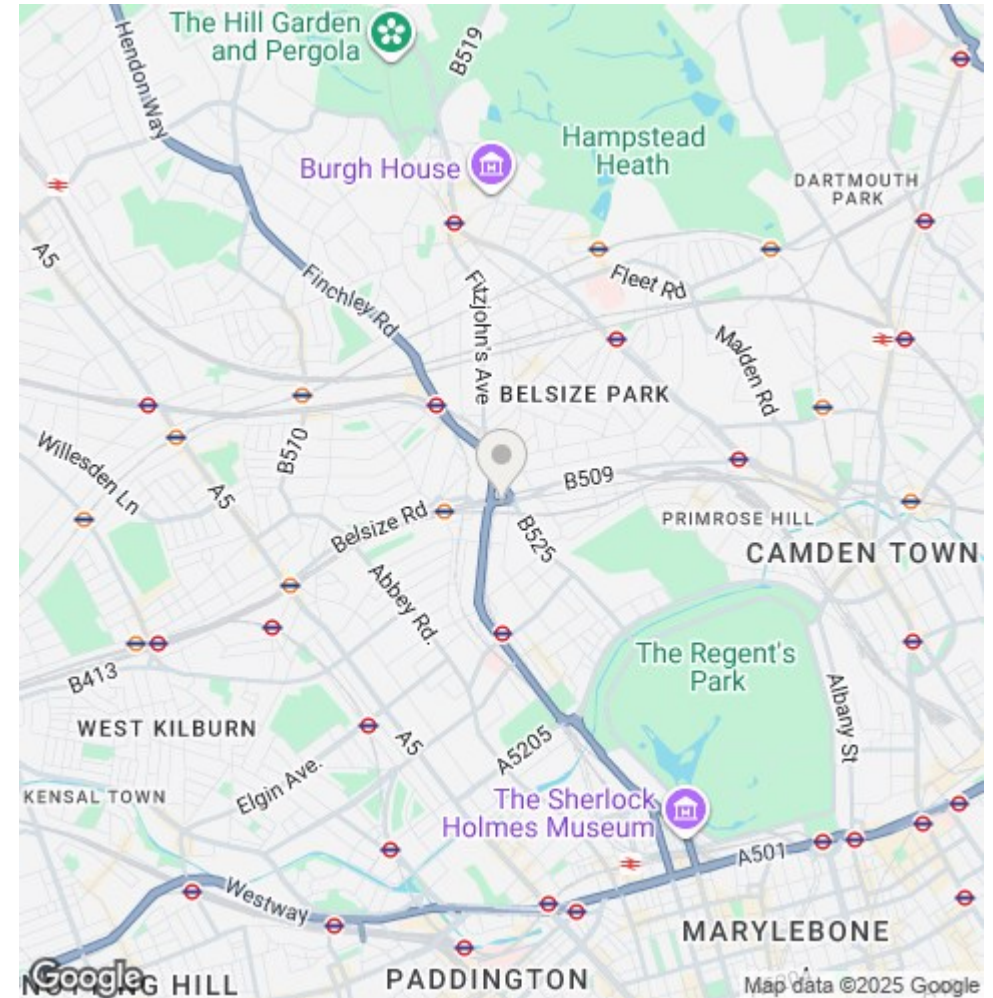
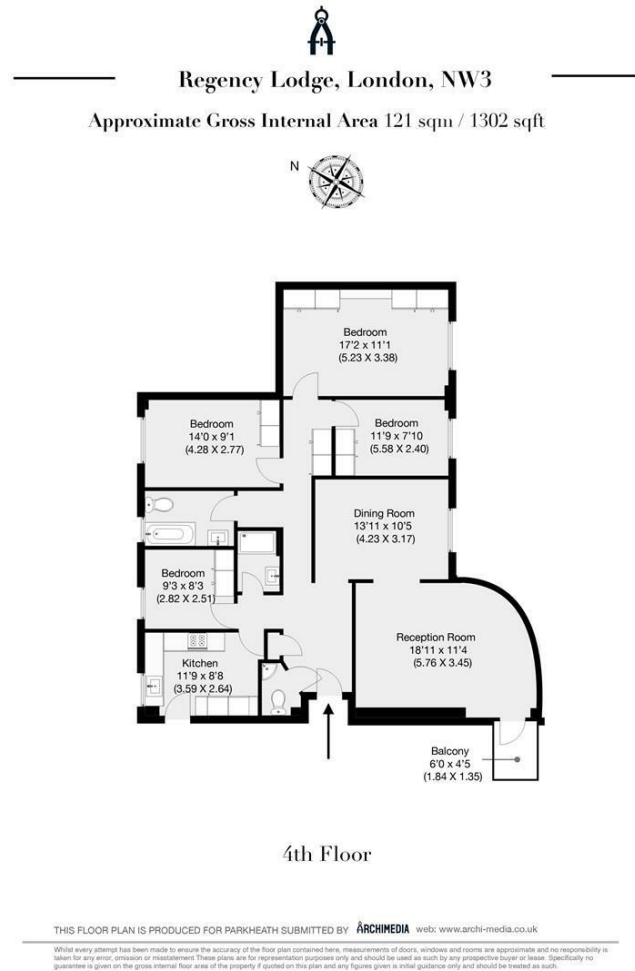
Kensal Rise
54-56 Chamberlayne Rd
NW10 3JH
Tel 020 8960 4845
kensal@parkheath.com

Property Management
192 West End Lane
NW6 1SG
020 7433 6174
pm@parkheath.com

www.parkheath.com

Parkheath
Sold on Service

Camden Tax band F



The particulars do not constitute part of an offer or contract. The particulars, including text, photographs and plans, are for the guidance only of prospective purchasers/tenants and must not be relied upon as statements of fact. The descriptions provided therein represent the opinion of the author and whilst given in good faith should not be construed as statements of fact. Nothing in these particulars shall be deemed a statement that the property is in good condition or otherwise or that any services or facilities are in good working order. All measurements are approximate